



*Welcome to  
Olympia,  
Washington's  
Capitol*

# 2019 ASCLS-WA Spring Seminar

Hotel RL Olympia  
Olympia, WA  
April 25 - 26, 2019

# Our Awesome Sponsors

THANK  
YOU

The 2019 ASCLS-WA Spring Seminar would like to extend its sincere thanks to the following companies for their support.

Abbott Rapid Diagnostics

AUDIT MicroControls

Beckman Coulter

Bloodworks NW

Cellavision

Diagnostica Stago

Genmark Diagnostics

Newport Hospital and Health Services

North Puget Sound Society for CLS

Response Bio

Sarstedt, Inc

Siemens Healthineers

Sysmex America

## 2019 Spring Seminar At A Glance

<b>Thursday April 25, 2019</b>	AM	1	2	3	4
		Ingredients and Recipes in an Immunohematologist's Cookbook	Platelets & Red Blood Cells: Purpose, Pictures plus Problems	It is CLIA-Waived So Nothing Can Go Wrong, Right?  Don't Take That Antibiotic! You Might Get. . .Fat? The Science of Healthy Microbiome	Paradigm Shift in Allergy Medicine  Clinical and Diagnostic Testing of Patients with Cardio-renal Syndrome
	PM	5	6	7	
		Quality System Essentials	Best Practices in Coagulation Anticoagulation: Now and in the Future	The Current Status of Influenza Testing The Current Status of C. difficile Testing	
<b>ASCLS-WA Board Meeting and House of Delegates Thursday, April 25, 2019, 4:45 PM</b>					
<b>Friday April 26, 2019</b>	AM	9		11	12
		Beta-Hydroxybutyrate Testing in the Diabetic Patient		Digital Cell Morphology for Standardizing Advanced RBC Morphology and Competency Software for Quality with Relevant Case Studies  Moving Hematology Forward	Calibration Verification - Guidelines and Regulations  Practical Approaches To Installation/Validation Of New Laboratory Tests
	PM	13	14	15	
		Surviving Instrument Downtime  Restructuring of Workflow in the Lab in Today's Tech Shortage Workforce  Millennials In Today's Workforce	So You Think You Know Microbiology?	Are You Current with Your GP41 CLSI Phlebotomy Standards?	
<b>Check out the <a href="#">Student Posters</a></b>					

# Welcome to the 2019 ASCLS-Washington Spring Seminar

Here is some important information that you need to know!

## To Register by Mail:

Complete the registration form and mail the registration form and check payable to “Spring Seminar” to:

Brenda Kochis  
ASCLS-WA Spring Seminar  
44 West 26th Avenue  
Spokane, WA 99203-1818

If questions:

Contact: [BrenKoch@comcast.net](mailto:BrenKoch@comcast.net)  
(email contact is preferred)

Phone: 509-939-8445 (leave message) Call before 7 pm please.

- » **Registration mail postmark by date: April 10, 2019.** This assures that your form will be delivered in time for us to provide you with the handout access information. This is not a deadline date; registration remains open through the seminar.

## To Register Online:

Go to [www.asclswa.org](http://www.asclswa.org) and click on the Spring Seminar tab. On the Spring Seminar page, click on Registration to see the link for online registration. Credit cards can be used to pay for registration.

- » Registrants using the online form must have a completed registration by **April 22, 2019** to receive lunch if eligible.

## Special Member Registration Rates

Any person currently a member in good standing of the following organizations can qualify for special member registration rates for this meeting:

- AABB (American Association of Blood Banks)
- AACC (American Association for Clinical Chemistry)
- ASC (American Society of Cytology)
- ASCP (American Society of Clinical Pathologists)  
Laboratory Professional Membership Category  
*NOTE: Certification only through ASCP does NOT qualify you for “Special Member” rates.*
- ASCT (American Society for Cytotechnology)
- ASH (American Society of Hematology)
- ASM (American Society of Microbiology)
- CLMA (Clinical Laboratory Management Association)

## Student Registration

If you are a student in one of the Washington Clinical Laboratory Science education programs listed below, you may register for **one session at NO CHARGE** courtesy of ASCLS-Washington. See your Program Director for more information about this offer and for help in registering for the 2019 ASCLS-WA Spring Meeting.

Washington Clinical Laboratory Science Educational Programs:

- Clover Park Technical College MLT Program
- Heritage University CLS Program
- Providence Sacred Heart Medical Center MT Program
- Shoreline Community College MLT Program
- University of Washington MT Program
- Wenatchee Valley College MLT Program

## Handouts ONLY Available On-line

To keep registration rates as low as possible, the Spring Seminar no longer provides paper copies of the session handouts at the meeting. Session handouts will be available for download at the ASCLS-WA website, [www.asclswa.org](http://www.asclswa.org), Spring Seminar Link. Remember to print copies of the handouts for the sessions you registered for and bring them to the meeting with you. If you are having problems downloading a handout, please contact Brenda Kochis, [BrenKoch@comcast.net](mailto:BrenKoch@comcast.net). Handouts for the sessions will be available on the ASCLS-WA website approximately 2 weeks prior to the meeting in a password protected area, at which time you will receive the “password” and instructions on how to print the handouts. The email will be from [BrenKoch@comcast.net](mailto:BrenKoch@comcast.net), so watch for it. Register early so that you can print the handout material for your sessions.

## Spring Seminar Committee

General Chair	Leonard Kargacin
Program	Leslie Nakagawa, Chair Sharon Johnson Ashley Gardner
Registration	Brenda Kochis
Program Design	Brenda Kochis
Finance	Leonard Kargacin
Moderators	Toni Okada
Sponsors	Leslie Nakagawa
Webmaster	Brenda Kochis

## ASCLS-Washington

Region IX Director	Terese Abreu
President	Leslie Nakagawa
President Elect	
Secretary	
Treasurer	Brenda Kochis
Past President	Shawna Martin

ASCLS-WA Board Meeting and House of Delegates  
Thursday, April 25, 2019, 4:45 PM

## Northwest State Society of the American Medical Technologists

President	Roxanne Erskine
Secretary	Danielle Rathbun
Treasurer	D'Maurier Barnhart

## Session Information

Registration Hours  
7:30 AM - 8:30 AM  
12:30 PM - 1:00 PM

Scientific Session  
8:30 AM - 11:45 AM  
1:00 PM - 4:15 PM

Coffee Breaks  
10:00 AM - 10:15 AM  
2:30 PM - 2:45 PM

**Lunch** is from 12:00 - 1:00 PM each day. Individuals pre-registered for **an AM and a PM session on the same day** will be provided lunch. Lunch cannot be guaranteed for onsite registrants.

**Name Badges** are required for entrance to all sessions.

**Smoking:** There is no smoking during the sessions or in the Red Lion.

**Dress:** Casual business dress is appropriate.

**Cell Phones/Pagers:** As a courtesy to the speakers and registrants, all cell phones and pagers must be turned off during the sessions.

**Meeting Room Assignments:** The meeting room assignments will be printed on the session sheet in your registration packet.

## Session Accreditations

P.A.C.E.® credits have been approved for all appropriate sessions.

ASCLS-WA is approved as a provider of continuing education programs in the clinical laboratory sciences by the ASCLS P.A.C.E.® program. Additionally, ASCLS-WA is approved as a provider for California clinical laboratory licensees under P.A.C.E.® California accrediting agency license number 0001. ASCLS-WA will be using CE Organizer for documentation of continuing education credits. Please make note of the P.A.C.E.® number. The session number will be given to attendees upon completion of the online evaluation. Without this information, the attendee will not be able to obtain their electronic certificate.

# Hotel RL Olympia

2300 Evergreen Park Drive,  
Olympia, WA 98502  
Phone: 855-213-0582

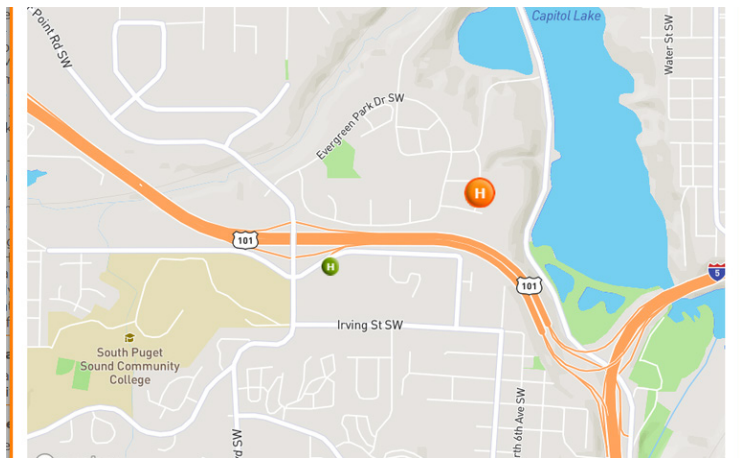
**Rates:** Standard Single  
\$128.00 per night plus state and local tax

Please mention that you are with 2019 ASCLS-WA Spring Seminar to obtain these rates. Rates are held until April 3, 2019, after which room rates are at the discretion of the hotel.

Please check the website at [www.asclswa.org](http://www.asclswa.org). On the Hotel page there is a [direct link](#) to register for a room at the special rate.



Map



**Session 1**                      **8:30 - 11:45 am**                      *Intermediate*                      *3 contact hours*

**Ingredients and Recipes in an Immunohematologist’s Cookbook**

- **LaySee Er, MSTM, SBB(ASCP)<sup>CM</sup>**  
Bloodworks NW  
Seattle, WA
- **Thandar Aye, SBB(ASCP)<sup>CM</sup>**  
Bloodworks NW  
Seattle, WA

Immunohematologists use a variety of tools and techniques to resolve complex serologic problems that are out-of-scope for transfusion service laboratories. In this program, you will learn about these tools and techniques along with case studies featuring examples of how different techniques were used.

- ⇒ Describe the common serological tools used in the immunohematology reference laboratory.
- ⇒ Discuss example cases of how different techniques can be used to resolve moderate to complex serologic problems.
- ⇒ Discuss advantages and disadvantages of methods described.

*Sponsor: Bloodworks NW*

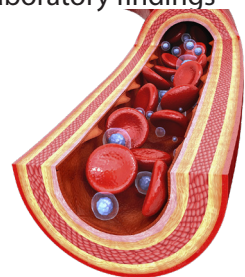
**Session 2**                      **8:30 - 11:45 am**                      *Intermediate*                      *3 contact hours*

**Platelets & Red Blood Cells: Purpose, Pictures plus Problems**

- **Evelyn Graham, MT(ASCP)**  
Cancer and Hematology Centers of Western Michigan  
Grand Rapids, MI

This presentation takes an in depth look at conditions involving platelets and red blood cells. It reviews the function of platelets, describes their role in the clotting process, and explores conditions triggering platelet activation. It examines various causes of anemia, signs and symptoms of the disease, and treatment options. In addition, case studies will be reviewed highlighting relevant laboratory findings to assist with the diagnosis and management of related conditions.

- ⇒ Explain the basic function of platelets and define their role in the clotting process.
- ⇒ State causes, signs, and symptoms of anemia as well as treatment options.
- ⇒ Review relevant laboratory findings for diagnosing related conditions through case study analysis.



*Sponsor: Sysmex America*

## It is CLIA-Waived So Nothing Can Go Wrong, Right?

### - Norman Moore, PhD

Abbott Rapid Diagnostics  
Scarborough, ME

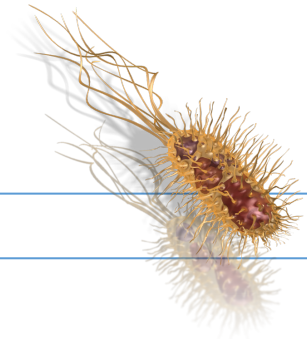
CLIA-waived tests can be done in a variety of settings to help guide therapeutic decisions. However, no test is foolproof. This lecture will cover issues such as proper sample collection, interfering substances, and other issues that can impact these assays.

- ⇒ Explain sample collection and the bearing it can have on test results.
- ⇒ List potential issues with cross-reactivity.
- ⇒ Define issues with particular disease states that could give inaccurate results.

## Don't Take That Antibiotic! You Might Get. . .Fat? The Science of Healthy Microbiome

Even though the global threat of antibiotic resistant microorganisms is significant, many patients demand antibiotics and doctors are far too willing to provide them. This talk shows that the relationship between us and our bacteria is more important than previously thought. Disrupting that balance can cause a host of medical issues.

- ⇒ Define the issue of antibiotic resistance.
- ⇒ Discuss the medical impact of disrupting the normal microbiome.
- ⇒ Assess how testing can improve outcomes for patients.



*Sponsor: Abbott Rapid Diagnostics*





## Paradigm Shift in Allergy Medicine

- **Monet N. Sayegh, MD, MHS, BS,MT(ASCP)SH,CLS**

Siemens Healthineers Diagnostics  
Los Angeles, CA

The incidence of allergy and asthma is on the rise worldwide. There are about 55 million Americans who suffer from allergies. Approximately 300 people die from severe allergic reactions each year in the United States. Allergy is the sixth leading cause of chronic disease in the US and costs to the healthcare system total \$18 million per year. Traditionally, allergy specialists had the primary responsibility to diagnose and manage allergy patients. However, with the advent of newer more sensitive in vitro allergy testing methods, primary care physicians can now confirm a diagnosis and decide whether the patient can receive appropriate treatment or must be referred to a specialist.

- ⇒ Discuss the biochemical basis of the allergic reaction.
- ⇒ List the advantages of 3g allergy testing and disadvantages of in vivo/vitro allergy testing.
- ⇒ Analyze case studies using the development of a new concept in allergy diagnosis called component resolved diagnosis.

## Clinical and Diagnostic Testing of Patients with Cardio-renal Syndrome

The layout of this talk begins with an explanation of the concept of the Cardio-renal syndrome. Rather than calling it a disease, it is named a syndrome, because several at the time unrelated symptoms tend to cluster together. Whereas a disease has a clean and clear explanation of pathophysiology. The understanding of this syndrome is seemingly quite complex. We will look at how we define it, what types there are, and what is known about the underlying pathophysiology. We will review the current guidelines by the American Diabetes association and the Kidney Foundation and review case studies that can help us pull this information together with real-life applications of these recommended guidelines within real-life patients.

- ⇒ Explain the cardio-renal syndrome mechanisms underlying the relationship between HF and renal dysfunction.
- ⇒ Discuss the stages of chronic renal disease defined by the National Kidney Foundation.
- ⇒ Review current and emerging biomarkers through the continuum of Chronic Kidney Disease.



---

*Sponsor: Siemens Healthineers*

---

## Quality System Essentials

- **Sean Carl, MS**  
Bloodworks Northwest  
Seattle, WA
  
- **Denise Kirby, LSSGB**  
Bloodworks Northwest  
Seattle, WA

This presentation is for new lab professionals who want to gain a better understanding of quality system essentials. Focused topics will include procedure writing, components of a document control system, form design, error management, inspection preparedness, and training and competency programs. This high level review of critical elements associated with the focused topics is designed to improve understanding of needed elements to improve compliance in regulated environments.

- ⇒ Identify critical elements of a quality management system.
- ⇒ Describe key components of focused topics.
- ⇒ Assess existing processes using the discussion points to evaluate a laboratory's current state of compliance.

---

*Sponsor: Bloodworks NW*

---



### Handouts

Handouts are only available online at [www.asclswa.org](http://www.asclswa.org). Several weeks before the Seminar, Registrants will receive an email from [BrenKoch@comcast.net](mailto:BrenKoch@comcast.net) with session confirmations and instructions for accessing the handouts. Be sure to print them and bring them with you to the meeting. No handouts will be available onsite.

## **Best Practices in Coagulation;**

**- Katherine (Katy) Whelchel MT(ASCP)SH**

Diagnostica Stago  
Rogers, AR

We all strive to practice good laboratory medicine. Coagulation is different from Chemistry; we are dealing with complex chemical reactions even when performing a simple Prothrombin Time. This session will explore how we can be assured our coagulation testing is the best we can offer.

- ⇒ Define Pre-Analytical variables and why they are critical in coagulation testing.
- ⇒ Discuss how reagent preparation may impact testing and workload efficiencies.
- ⇒ Present the components of a good quality control program.

## **Anticoagulation: Now and in the Future**

**- Paul Riley, PhD, MBA**

Diagnostica Stago  
Parsippany, NJ

Anticoagulation is a rapidly changing field. However, the traditional anticoagulants are not going away. This session will discuss both traditional anticoagulation (Coumadin, heparin), plus the newer Direct Oral Anticoagulants. We will also discuss how the DOACs impact us in the routine coagulation lab.

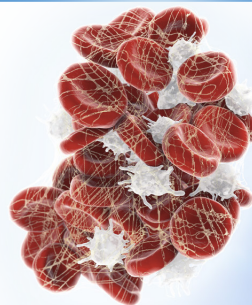
- ⇒ Discuss current methods for monitoring traditional anticoagulants.
- ⇒ Demonstrate the impact of new oral anticoagulants on routine and specialty coagulation assays.
- ⇒ Discuss a case study highlighting the role of the laboratory for this testing regime.

---

*Sponsor: Diagnostica Stago*

---

***Have you visited the student poster sessions yet? If not, plan to spend some time there tomorrow***



---

## The Current Status of Influenza Testing

**- Norman Moore, PhD**

Abbott Rapid Diagnostics  
Scarborough, ME

Influenza outbreaks happen yearly. The variety of strains makes predicting the severity of the season or the efficacy of the vaccine difficult. Early diagnosis can help differentiate influenza from pneumonia so appropriate therapy can be given.

- ⇒ Discuss the medical impact of influenza.
- ⇒ Define the connection between influenza and pneumonia.
- ⇒ Compare how best to utilize diagnostic options including patient sample acquisition.

## The Current Status of *C. difficile* Testing

*Clostridioides difficile* may cause anything from asymptomatic colonization to significant diarrhea to pseudomembranous colitis. It is quite often acquired in healthcare environments when patients are put on antibiotics that subsequently disrupt the intestinal microflora. This lecture covers the latest guidelines and data on diagnostic methodologies.

- ⇒ Define the medical significance of *C. difficile* infections.
- ⇒ Discuss the issue of how *C. difficile* is spread.
- ⇒ Outline the medical guidelines for testing and the options available.

---

*Sponsor: Abbott Rapid Diagnostics*

---

# Multiplex Molecular Diagnostics for Infectious Disease: How We Got Here and Where We Are

**has been cancelled.**

*Session 9*

*8:30 - 11:45 am*

*Intermediate*

*3 contact hours*

## **Beta-Hydroxybutyrate Testing in the Diabetic Patient**

**- Tina Batsch MT (ASCP)**

Newport Hospital and Health Services  
Newport, WA

One of the major consequences of diabetes is the development of hyperglycemia with ketoacidosis and diabetic coma. This session will take an in depth look at the physiology and biochemistry of the insulin dependent diabetic. Management of the disease will be discussed including proper insulin regulation, diet, and exercise. The role of laboratory beta hydroxybutyrate testing during the ketoacidosis state will be presented.

- ⇒ List the three most important factors in diabetes management.
- ⇒ Describe the differences between infusion pump and insulin injection management
- ⇒ Define what Beta hydroxybutyrate testing is and its importance in the monitoring of ketoacidosis.



*Sponsor: Newport Hospital and Health Services*

*Session 10*

*8:30 - 11:45 am*

*Intermediate*

*3 contact hours hours*

**Overcoming Challenges in the Pre-analytical Phase of POC Testing  
has been cancelled**

## **Digital Cell Morphology for Standardizing Advanced RBC Morphology and Competency Software for Quality with Relevant Case Studies**

**- Scott Dunbar, MS, BS**

CellaVision  
Flower Mound, TX

In the session there will be a discussion about a software tool which will standardize all sub-types of RBC morphology using digital Cell Morphology. The observer will see how standardizing can bring consistency to a very subjective area of the laboratory. The speaker will also demonstrate proficiency software, a valuable training tool for new techs as well as annual competency. Finally a live software demonstration with esoteric case studies will be presented.

- ⇒ Describe how using artificial intelligence and neural networks can standardize RBC Morphology variability.
- ⇒ Discuss the value of improving turn around time on RBC smears involving schistocytes.
- ⇒ View esoteric Case studies which will help elucidate future experiences in the laboratory.

---

*Sponsor: CellaVision*

---



## **Moving Hematology Forward**

**- Kathy A Davidson Altig, BS,MT(ASCP)**

Beckman Coulter  
West Linn, OR

Hematology is no longer just counting cells. This session will help you understand what other information our automated hematology instruments can provide for us. We will be looking at the history of Hematology, Hematology technology, and identify where future of Hematology is going.

- ⇒ Discuss how Hematology got to where it is now.
- ⇒ Discuss current Hematology technology.
- ⇒ Articulate some of the new information available from automated Hematology.

---

*Sponsor: Beckman Coulter*

---

## **Calibration Verification - Guidelines and Regulations**

**- Mario Gastelum, BS, MBA**

AUDIT MicroControls, Inc  
Eatonton, GA

This presentation takes a deep dive into Calibration Verification. We will review various definitions and discuss the who, what, when, where, why, and how of calibration verification. We will also discuss how to interpret data (did I pass or fail and what does it all mean?) using various charts and graphs. The final part of the presentation will review troubleshooting protocol in the event calibration verification fails. Fun and Prizes!

- ⇒ Describe calibration verification and its process.
- ⇒ Discuss how to interpret calibration verification data.
- ⇒ Outline a troubleshooting protocol in the event your CV fails.

---

*Sponsor: AUDIT MicroControls, Inc*

---



## **Practical Approaches To Installation/Validation Of New Laboratory Tests**

**- Jessica Wilson, BSc**

Response Biomedical Corp.  
Vancouver, BC

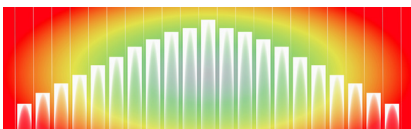
This session will cover common procedures used for installation/validation of new laboratory tests, including precision and method comparisons. Practical approaches to study design, including tips on troubleshooting common problems, will be discussed. Real-world examples will be used to illustrate different approaches to data analysis, including regression analysis and clinical concordance.

- ⇒ Describe common installation/validation procedures.
- ⇒ Outline practical approaches to study design.
- ⇒ Discuss the importance of incorporating patient diagnostic information during method comparison analysis.

---

*Sponsor: Response Biomedical Corp.*

---



## **Surviving Instrument Downtime**

## **Restructuring of Workflow in the Lab in Today's Tech Shortage Workforce**

## **Millennials In Today's Workforce**

### **- Tina J Batsch, MT (ASCP)**

Newport Hospital and Health Services  
Newport, WA

Part I-If you have ever worked in a lab, then chances are you have experienced instrument downtime. This session will begin with an example of a worse case scenario result of an instrument being down. Next, back-up and work around procedures will be discussed. Finally, a look at the aftermath and how instrument downtime effects the areas of billing and coding, result reporting, and the impact it had on the budget

Part II-Are you spending too much money on contracted temporary staff or running into too much overtime and not enough help? This session points out some options that can help reorganize the workload. We will look at job codes as well as look at waived, moderate-complexity, or high-complexity tests. Finally a look at what to consider if contracted staff is used for staffing

Part III-By 2030, it is predicted that 75% of the workforce will be comprised of Millennials! This session will define what the Millennial generation is and the impact it has in today's workforce. Time will be spent defining characteristics of other generations and how a team can work together in a busy lab.

- ⇒ Define what instrument downtime is.
- ⇒ List several options or ideas on how to distribute workload.
- ⇒ Discuss how to work with the different generations in the lab.

---

*Sponsor: Newport Hospital Health Services*

---





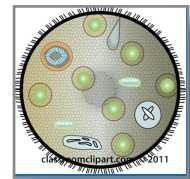
## So You Think You Know Microbiology?

**- Siu Kei (Jacky) Chow, PhD, D(ABMM)**

MultiCare Health System  
Tacoma, WA

The clinical microbiology field is evolving at a rapid pace. The advancement of knowledge and technology has promoted efficient clinical practice as well as accurate, rapid diagnoses of emerging infectious diseases. The speaker will provide an overview of the latest technologies and practices for the clinical microbiology laboratory. Additionally, recent highlights from the literature on laboratory function, epidemiology, and clinical practice will be reviewed.

- ⇒ Describe the dynamics between knowledge and practice in clinical microbiology.
- ⇒ Discuss the updates in clinical microbiology and their applications in medicine.
- ⇒ Discuss the potentials and limitations of the new technologies in clinical microbiology.



*Sponsor: North Puget Sound Society for Clinical Laboratory Science*

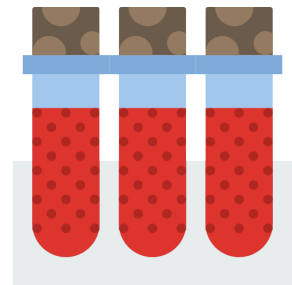
## Are You Current with Your GP41 CLSI Phlebotomy Standards?

**- Erika Ferreri, MAED, BSBM, CPT, CPI**

Edmonds Community College  
Everett, WA

The speaker will present the new CLSI standards and how they are different from the former CLSI standards. The speaker will reserve the last 1.5 hours as a interactive Q&A session with phlebotomy equipment.

- ⇒ Define the current CLSI standards regarding venipuncture procedures.
- ⇒ Explain the differences between the new and old standards and the basis for the change.
- ⇒ Identify resources to reference the new CLSI standards.



### Student Poster Session

A student poster session will be held as a part of the ASCLS-WA Spring Seminar!! Come and support our future laboratory professionals by visiting the poster presentations during the meeting.

# 2019 Student Posters



## **A Model Platform for Preventative Care: Family Cosegregation Analysis of Variant of Unknown Significance in MSH6 Gene**

**- Kristine Manuel, Dr. Brian Shirts, Christy Smith, Ginger Tsai at the Genetics and Solid Tumors Lab at UW**

With novel genetic tools, FindMyVariant and Analyze.MyVariant, family studies on MSH6 VUS (variant of uncertain significance) c.3040-3042delAAG which causes an inframe frameshift deletion was performed to determine whether an association to an increased risk of Lynch Syndrome. We performed the study on saliva samples through genotyping by Sanger Sequencing and analyzed the data using FLB (full likelihood Bayes factors) and CSLR (Cosegregation likelihood ratios). Our study illustrates how active partnerships contribute to the integration of genotypic and clinical information for the assessment of generalized health risks. Motivated individuals take ownership of their own preventative care, and contribute to research and medical education to understand genetic variation.

University of Washington

---

## **Optimization, Calibration, and Standardization of the BD FACSymphony™ Flow Cytometer for the HIV Vaccine Trials Network**

**- Maxwell Krist, Katharine Schwedhelm, Julie McElrath, Stephen De Rosa**

Using a QA protocol, we successfully optimized, calibrated, standardized, and qualified a new BD FACSymphony™ flow cytometer. This instrument is now ready to be integrated into the Cape Town HIV Immunology Laboratory flow cytometry lab and begin testing HIV vaccine clinical trial samples.

University of Washington

# 2019 Student Posters

## Peripheral Blood Specimen Stability in T-cell Immunophenotyping

- Pearl Woo

This poster is about T-cell immunophenotyping through 10-color flow cytometry as well as the stability of T-cell markers in sodium heparin vs EDTA.

University of Washington



## Comments from past seminar attendees

*Knowledgeable, interactive, fun, good speakers, takes lots of questions. Enjoyed and learned a lot.*

*Really enjoyed this. Love the enthusiasm and passion for the topic. Very interesting and exciting.*

*Great speakers, lots of new info. Updates. These are the kinds of speakers we need. They explain current and new information. Speaker provided many helpful examples.*

The 2019 Spring Seminar Program, registration form and any updates are available on the Internet at the following URL

**[www.asclswa.org](http://www.asclswa.org)**  
**Spring Seminar Link**

All information will be provided at this site. There is a registration form that you can print and mail with a check. Also, at this site there is a link to an online form that you can complete and pay using a credit card.

# Registration General Information

## To Register by Mail:

Complete the registration form and mail the registration form with a check payable to **Spring Seminar** to:

2019 ASCLS-WA Spring Seminar  
Brenda Kochis  
44 West 26th Avenue  
Spokane, WA 99203-1818

If questions:

Contact: [BrenKoch@comcast.net](mailto:BrenKoch@comcast.net) (email contact is preferred)

Phone: 509-939-8445 (leave message) Call before 8 pm please.

- » **Registration mail postmark by date: April 10, 2019.** This assures that your form will be delivered in time for us to provide you with the handout access information. This is not a deadline date; registration remains open through the seminar.

## To Register Online:

Go to [www.asclswa.org](http://www.asclswa.org) and click on the Spring Seminar tab. Click on "Online Registration" to go to the online form. Credit cards can be used to pay for registration.

- » Registrants using the online form must have a completed registration submitted by April 20, 2017 to receive lunch if eligible.

- **Lunch** is provided for those who register for two sessions on the same day. Lunch is not provided for those who register for one session a day or for those who register on site.
- **Handouts** for all sessions will only be available online. Registrants will be sent the web address, username, and password to access the handouts. Please print your email address clearly.
- **Sessions** are approved for P.A.C.E.® credits.
- **Hotel reservations:** See the website for more detailed information. Please call the hotel for reservations. Mention "**2019 ASCLS-WA Spring Seminar**" to get the seminar rates.
- **Rates** will be available until April 3, 2019 after which it will revert to standard hotel rates.
- **No "Spring Seminar" Registration refunds** will be issued.

**Fees are by session.** Sessions are 3 hours (half day). Please register for the membership category that you qualify for. More information about fee categories are on the website at [www.asclswa.org](http://www.asclswa.org) tab: Spring Seminar.

## Special Member Registration Rates

Any person currently a member in good standing of the following organizations can qualify for special member registration rates for the meeting:

- AABB (American Association of Blood Banks)
- AACC (American Association for Clinical Chemistry)
- ASC (American Society of Cytology)
- ASCP (American Society of Clinical Pathologists)  
Laboratory Professional Membership Category

**NOTE: Certification only through ASCP**

**does NOT qualify you for "Special Member" rates.**

- ASCT (American Society for Cytotechnology)
- ASH (American Society of Hematology)
- ASM (American Society of Microbiology)
- CLMA (Clinical Laboratory Management Association)

## Student Registration

If you are a student in one of the Washington Clinical Laboratory Science education programs listed below, you may register for **one session at NO CHARGE** courtesy of ASCLS-Washington. See your Program Director for more information about this offer and for help in registering for the 2019 ASCLS-WA Spring Meeting.

Washington Clinical Laboratory Science Educational Programs:

- Clover Park Technical College MLT Program
- Heritage University CLS Program
- Providence Sacred Heart Medical Center MT Program
- Shoreline Community College MLT Program
- University of Washington MT Program
- Wenatchee Valley College MLT Program

# Registration Form

2019 ASCLS-WA Spring Seminar

April 25 - 26, 2019

Olympia WA

Online registration and credit card payment is available at  
[www.asclswa.org](http://www.asclswa.org), Spring Seminar Link.  
 or  
 Mail this form with a check.

First Name \_\_\_\_\_ Last Name \_\_\_\_\_

Address \_\_\_\_\_

City/State/Zip \_\_\_\_\_

Day Phone \_\_\_\_\_ Evening Phone \_\_\_\_\_

Institution \_\_\_\_\_

City/State \_\_\_\_\_

Email Address \_\_\_\_\_

Are you willing to serve as a session moderator?  Yes  No

**Circle the sessions  
you will be attending.**

Thursday, April 25	AM	1	2	3	4
	PM	5	6	7	
Friday, April 26	AM	9		11	12
	PM	13	14	15	

Category	# Sessions	Fee/session	Total Fee
<b>ASCLS/AMT Professional/Technical</b> .....		\$45.00	\$
ASCLS # _____ AMT # _____			
<b>Special Member</b> .....		\$60.00	\$
___ AABB ___ AACC ___ ASC ___ ASCT ___ CLMA ___ ASM ___ ASH ___ ASCP Member number _____			
<b>Non-Member</b> .....		\$80.00	\$
<b>Phlebotomist</b> .....		\$35.00	\$
<b>Student</b> .....		\$25.00	\$
<b>Total Fee</b> .....			\$

Mail with check to  
 2019 ASCLS-WA Spring Seminar  
 Brenda Kochis  
 44 West 26th Avenue  
 Spokane, WA 99203-1818

Full payment in U.S. Dollars must accompany each mailed in  
 registration. Make check payable to **Spring Seminar**  
 Mail by April 10, 2019 to assure timely arrival.

**OR**

Online registration with credit card payment is available at  
[www.asclswa.org](http://www.asclswa.org), Spring Seminar link